



INTERNATIONAL
ICE HOCKEY
FEDERATION

Offense and the New NHL

The Effect of Rule Changes on the Offensive Aspect of the Game





Rule Changes: An Overview

Change in Attitude

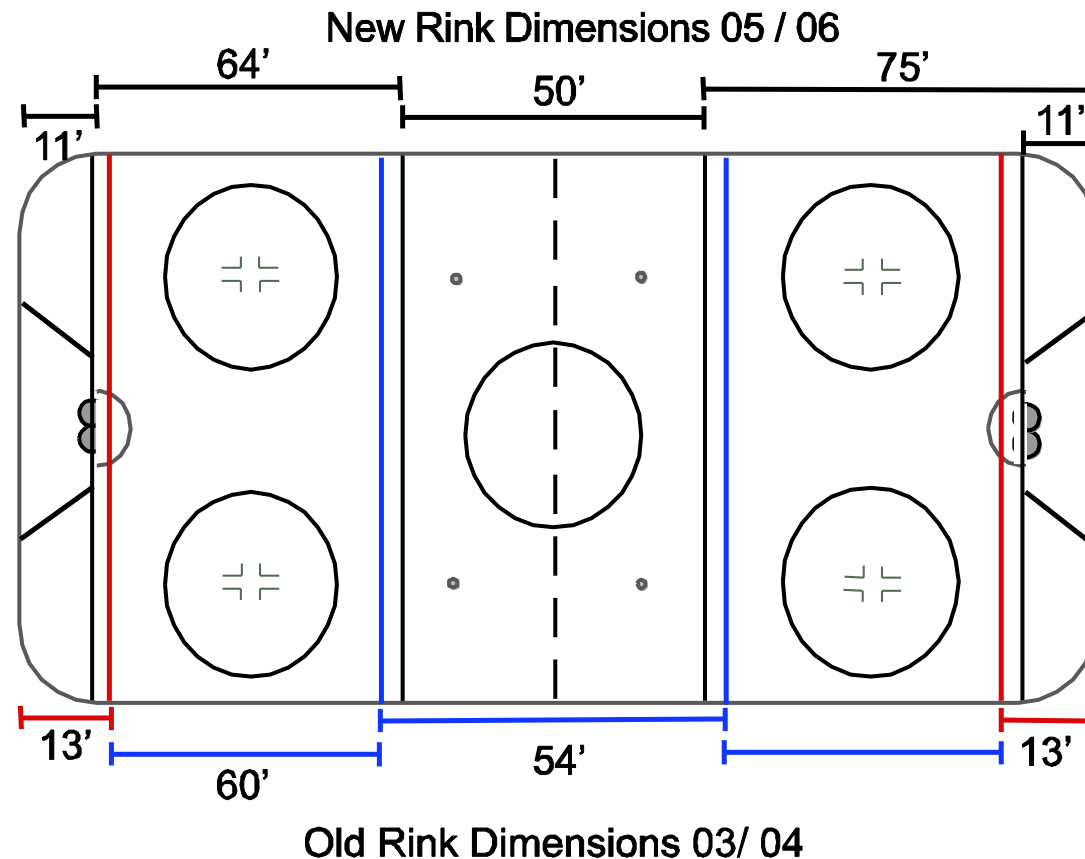
Change in Rink Dimension

Change in Rules



Rule Changes: An Overview

Change in Rink Dimension





Changes in Rink Dimensions

Results:

- Larger Offensive Zones
- More Net Front Play
- Increased Offense from the Point and Seam Areas



Rule Changes

The Enforcement of the Obstruction Rules and Removal of the Center Ice Red Line have Resulted in:

- High Tempo Game
- Linear Hockey
- More Forechecking
- Increased Special Teams Play
- More Open Ice Contact/Bigger Hits



Today's Successful Players



Forwards

- Speed/quickness
- Aggressive on the puck
- Individual Puck skills
- Ability to beat defenders 1on1
- Ability to drive to the net
- Size



Defense

The New Rules Have had the Biggest Effect on Defensemen

- Speed/Mobility
- Ability to Contain 1on1
- Ability to move the Puck and Generate Offense from the Point



Goaltenders

- Size
- Ability to play in traffic
- Puck Handling Ability
- Success in Shootouts



Successful NHL Teams

Teams that accepted and adapted the quickest to the new guidelines were the teams that got off to the best starts to the season.



Successful NHL Teams

- Team Speed/Quick Transition Game
- Aggressive on the Puck.
Forecheck/Force the Play
- Play Strong Team Defense
- Discipline



A Coach's Perspective

The New Rule Changes have brought about interesting coaching philosophies.

- What style of game do I play?
- How do I utilize my players?
- Practice philosophy